

# Connecticut Department of Public Health

## COVID-19 Race and Ethnicity Data Request

Below are data on the laboratory-confirmed COVID-19 cases and COVID-19 associated deaths by race/ethnicity for the state of Connecticut and the 10 largest Connecticut towns.

### About the data

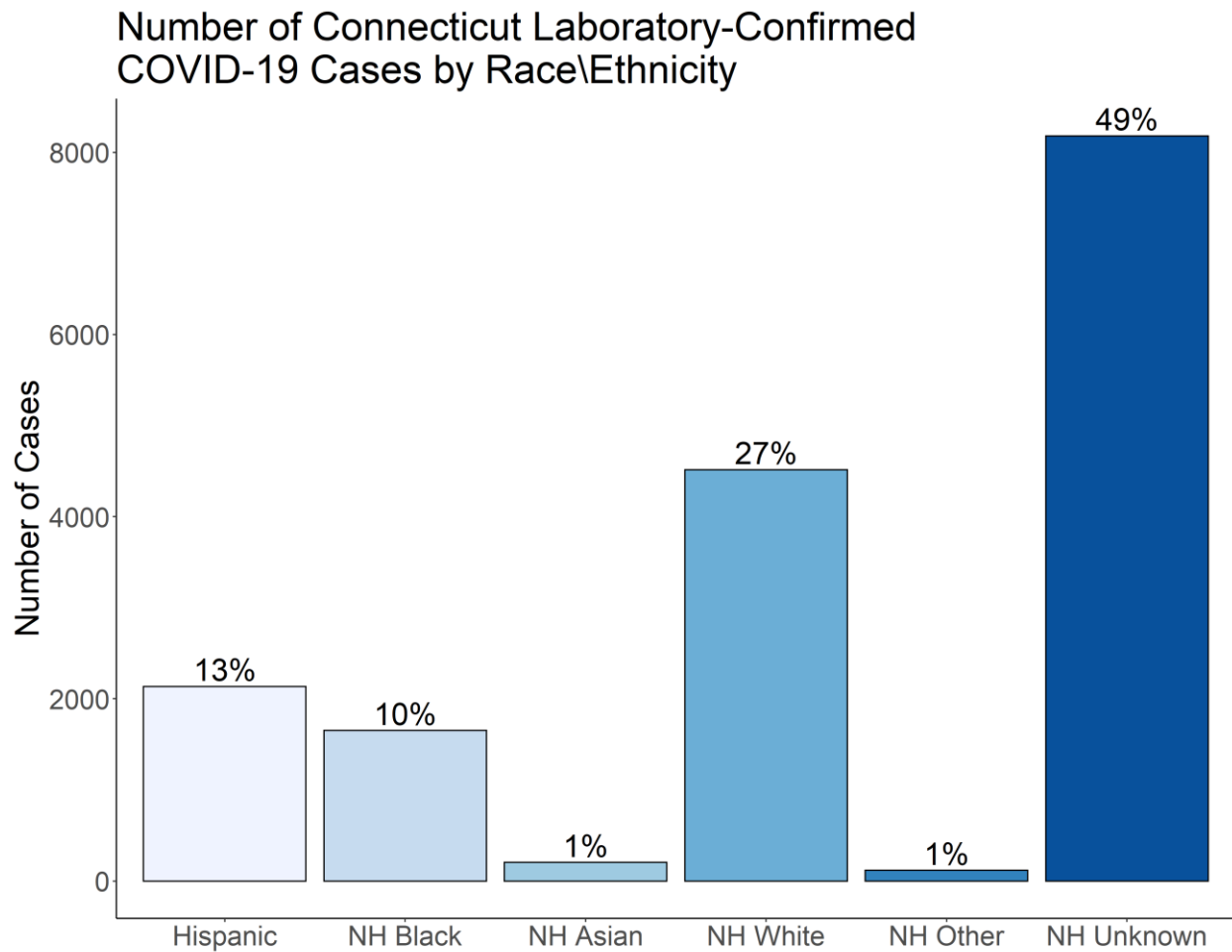
All data in this report are preliminary; data will be updated as new COVID-19 case reports are received and data errors are corrected. Data on COVID-19 cases and COVID-19-associated deaths were last updated on April 17, 2020 at 11:30 AM.

Information about race and ethnicity are collected on the Connecticut Department of Public Health (DPH) COVID-19 case report form, which is completed by healthcare providers for laboratory-confirmed COVID-19 cases. Information about the race/ethnicity of COVID-19-associated deaths also are collected by the Connecticut Office of the Chief Medical Examiner and shared with DPH. Race/ethnicity categories used in this report are mutually exclusive. People answering 'yes' to more than one race category are counted as 'other'. Counts may not add up to total case counts as data on race and ethnicity may be missing.

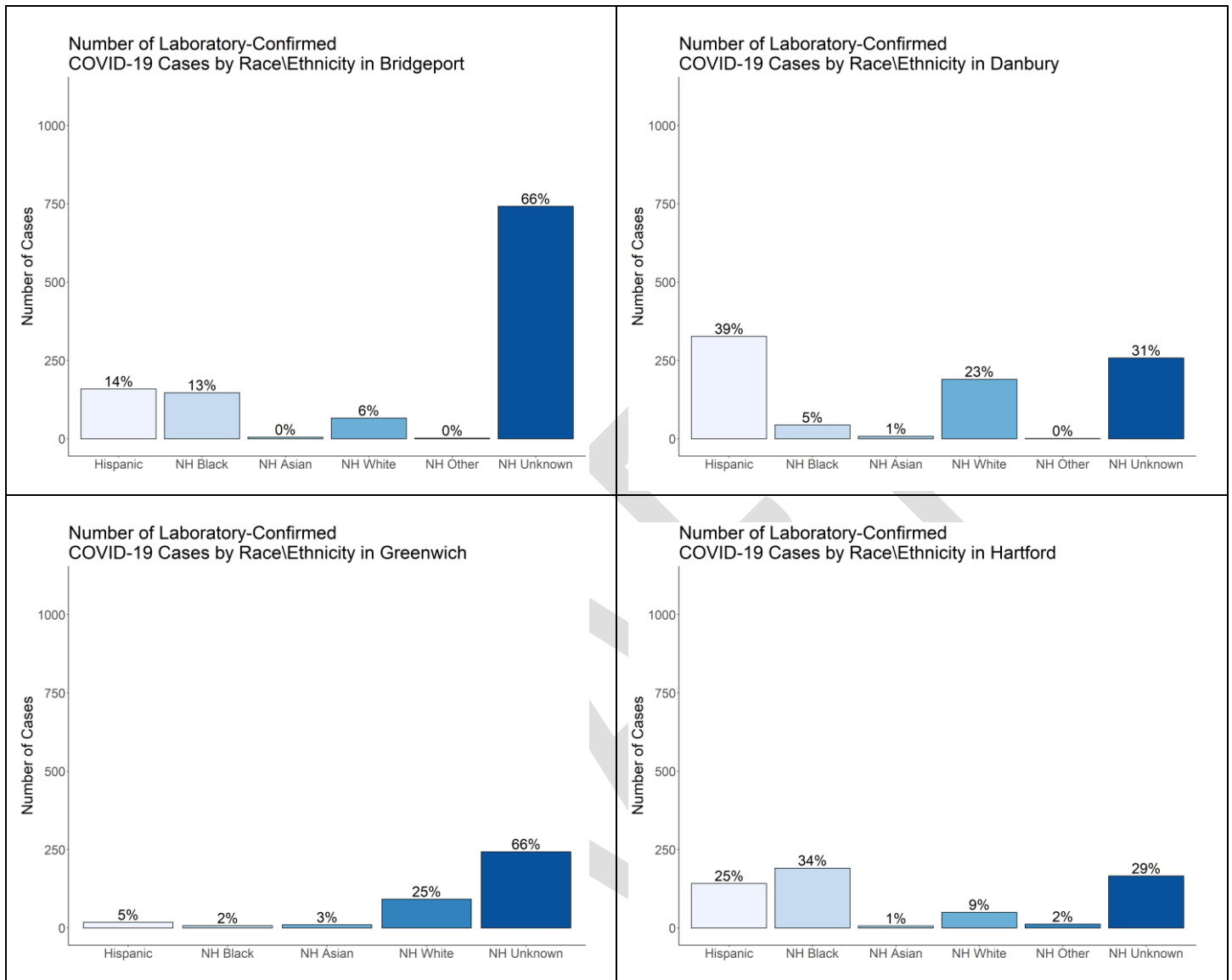
COVID-19-associated deaths include persons who tested positive for COVID-19 around the time of death and persons who were not tested for COVID-19 whose death certificate lists COVID-19 disease as a cause of death or a significant condition contributing to death. Statewide rates were calculated using 2018 Annual Population Estimates from DPH. Town-specific rates were calculated using 2014 post-censal estimates, the most recent available population data with stratification by race/ethnicity and age at the town level. All population data are available [online from DPH](#).

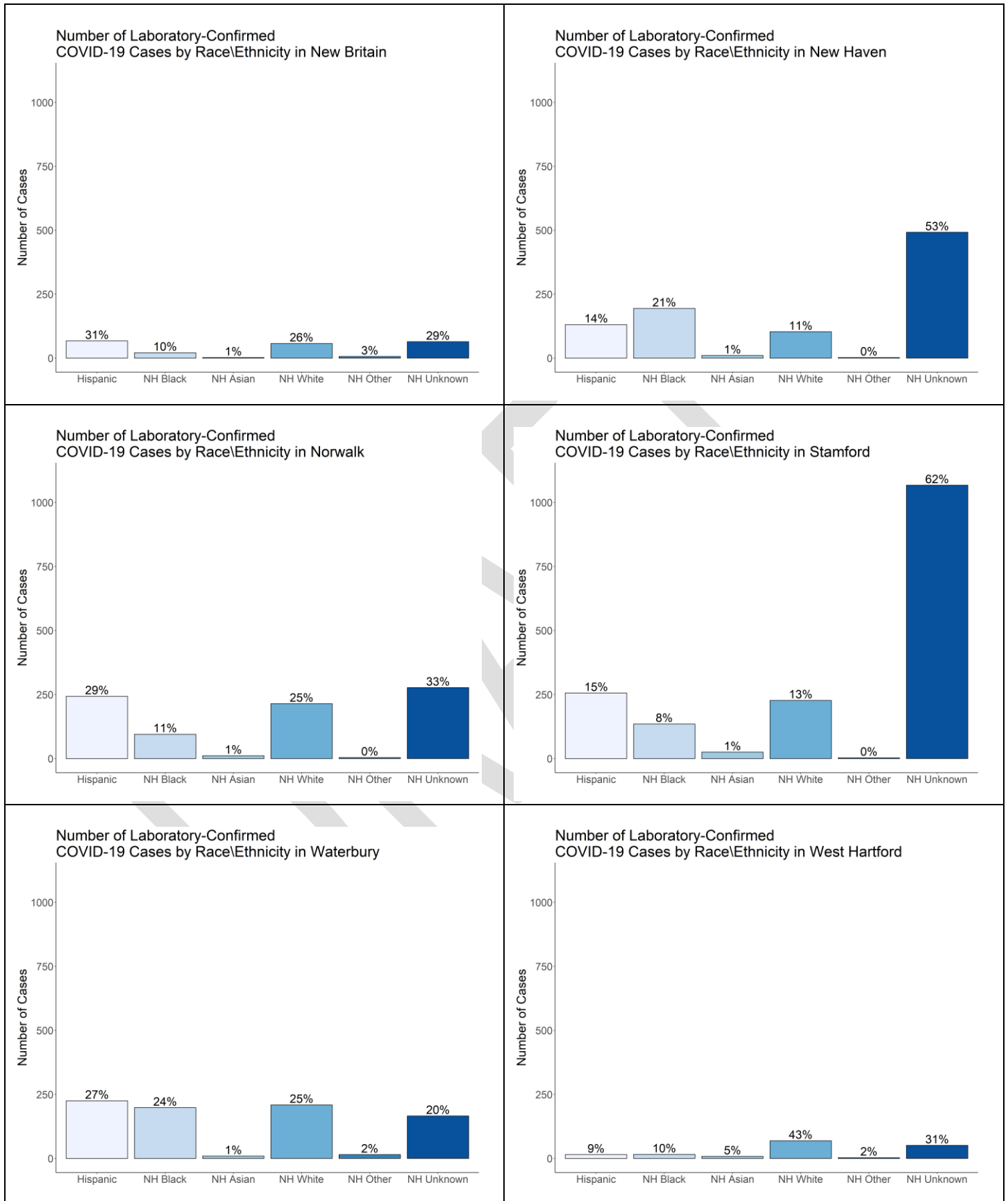
## 1. Number of laboratory-confirmed COVID-19 cases by race and ethnicity

NH = Non-Hispanic

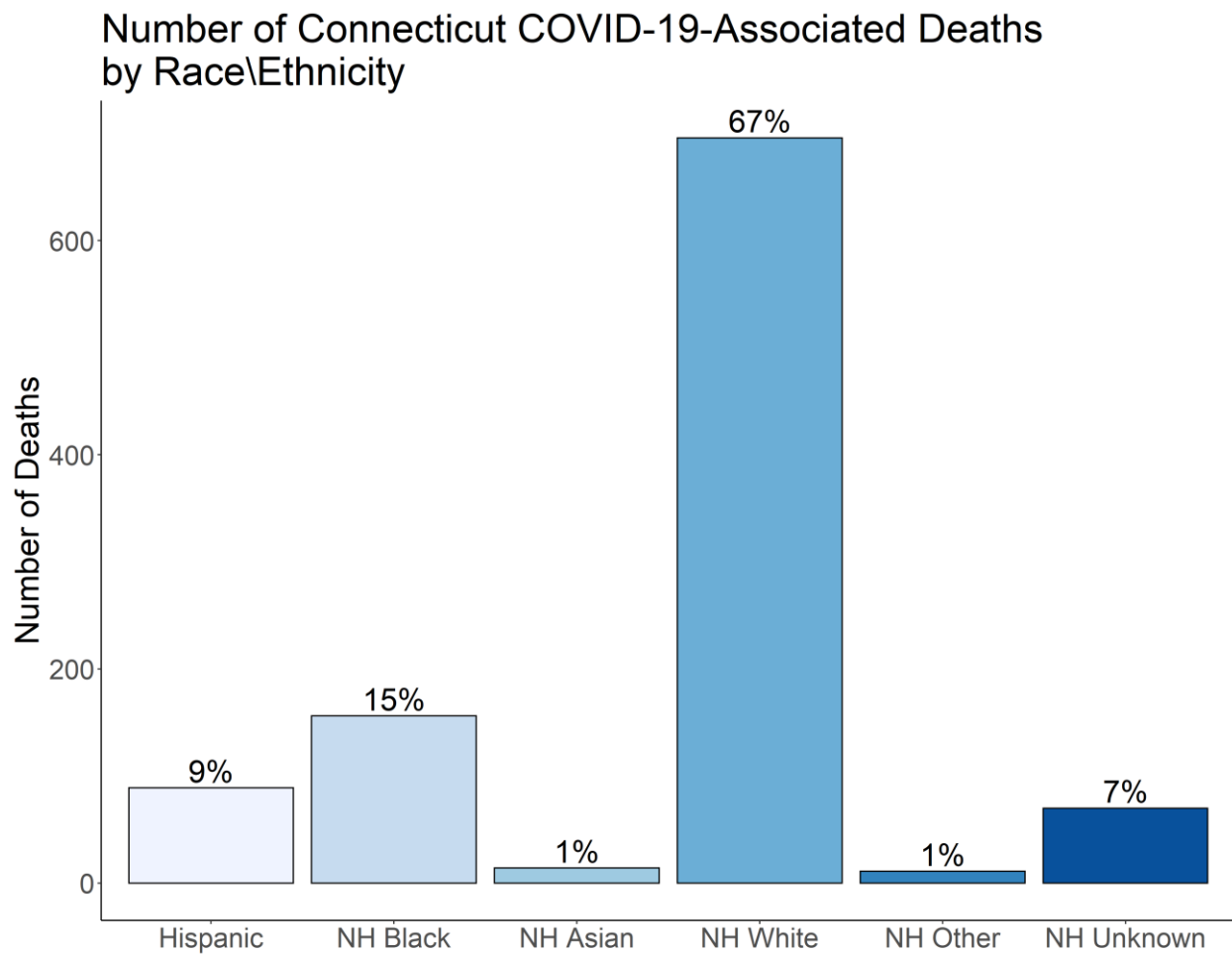


## Number and percentage of laboratory-confirmed COVID-19 cases by race and ethnicity for the 10 largest Connecticut towns

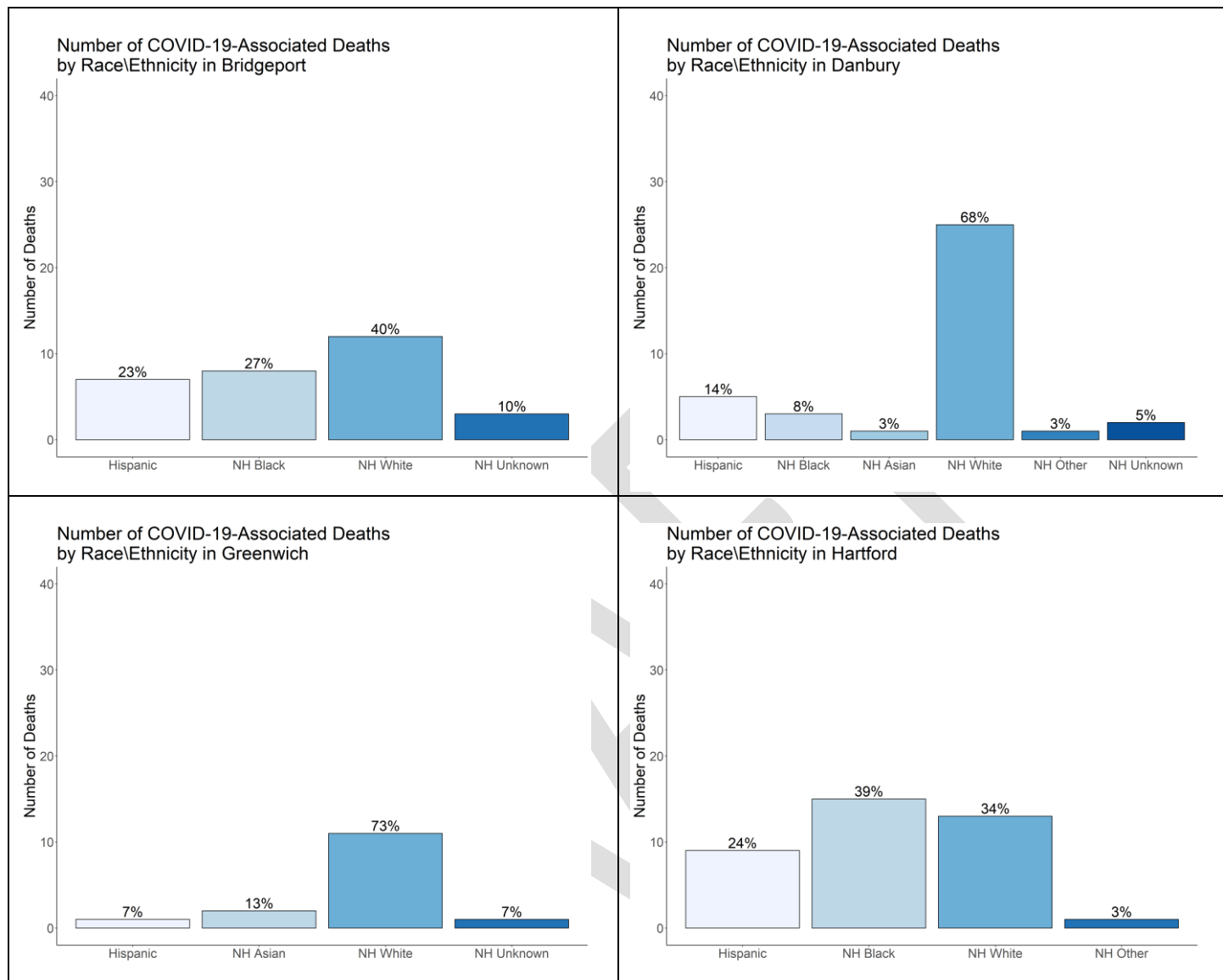


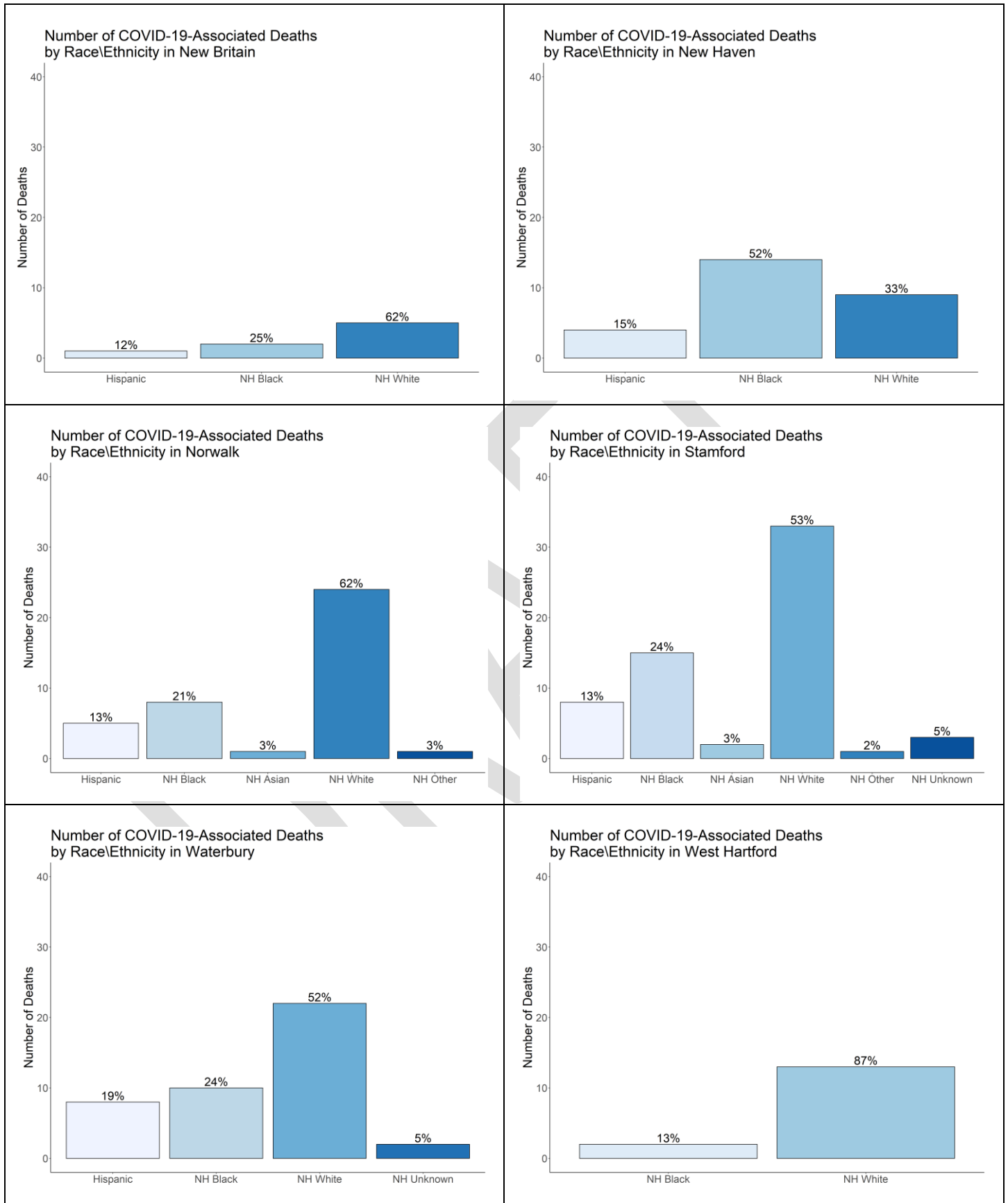


## 2. Number of COVID-19-associated deaths by race and ethnicity

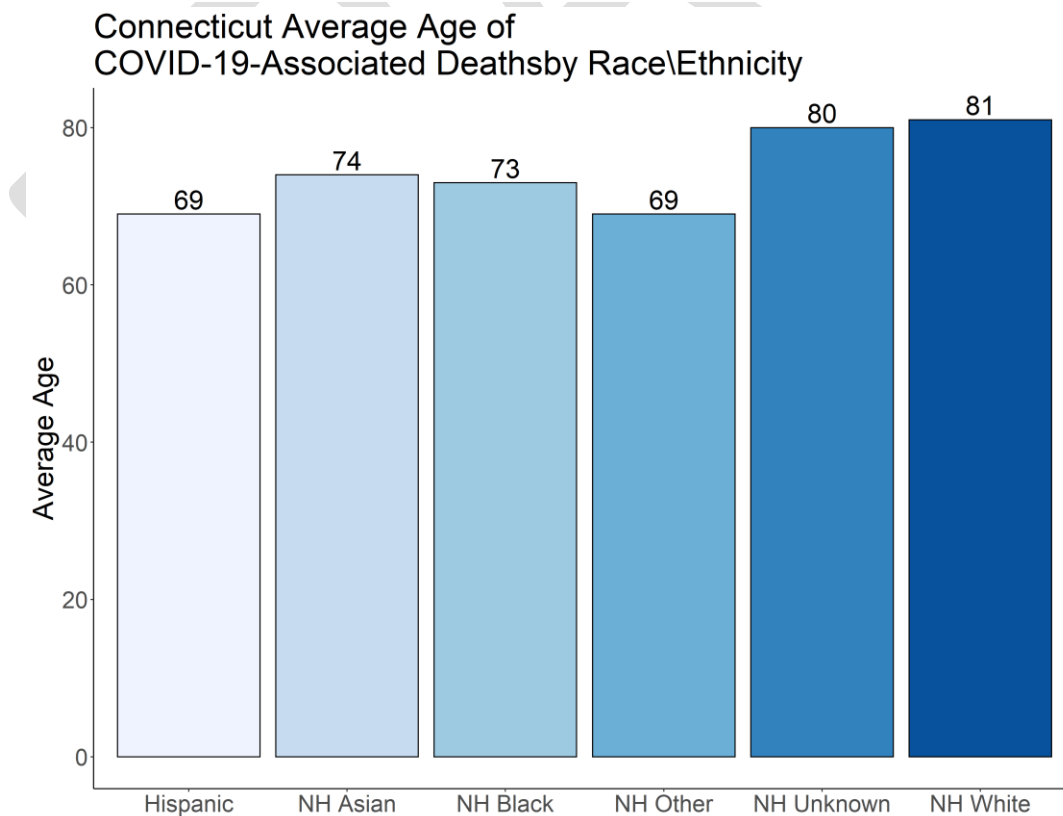
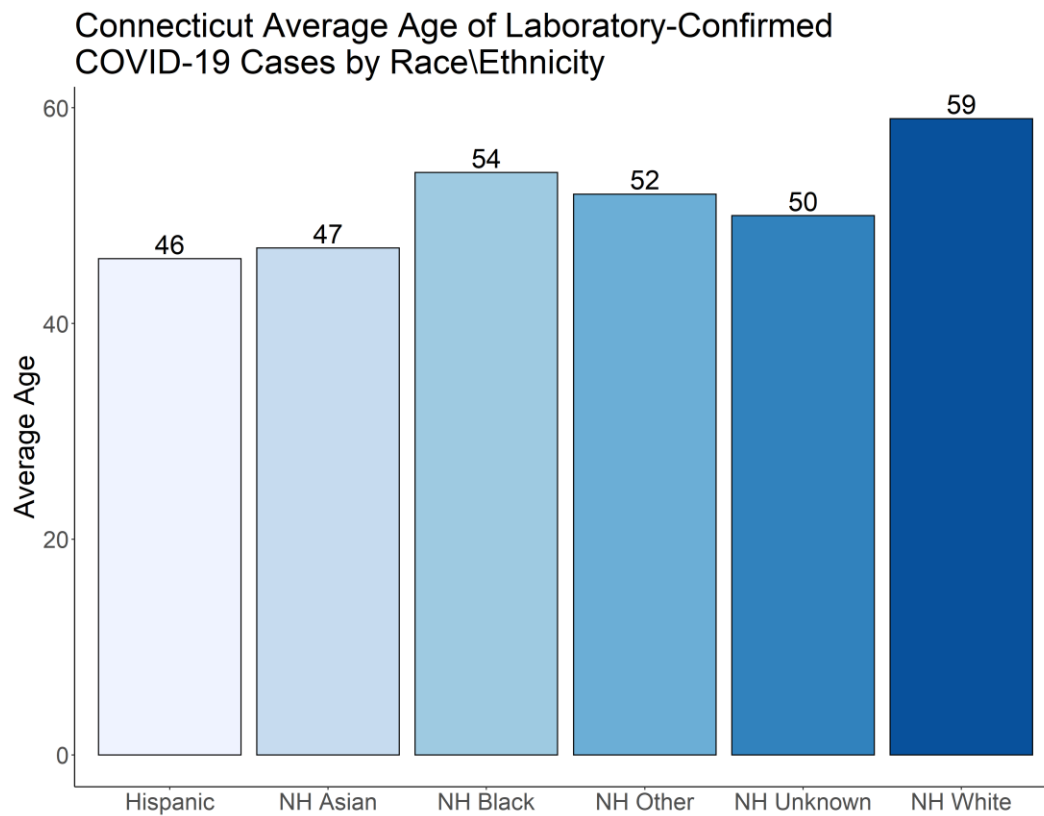


## Number and percentage of COVID-19-associated deaths by race and ethnicity for the 10 largest Connecticut towns



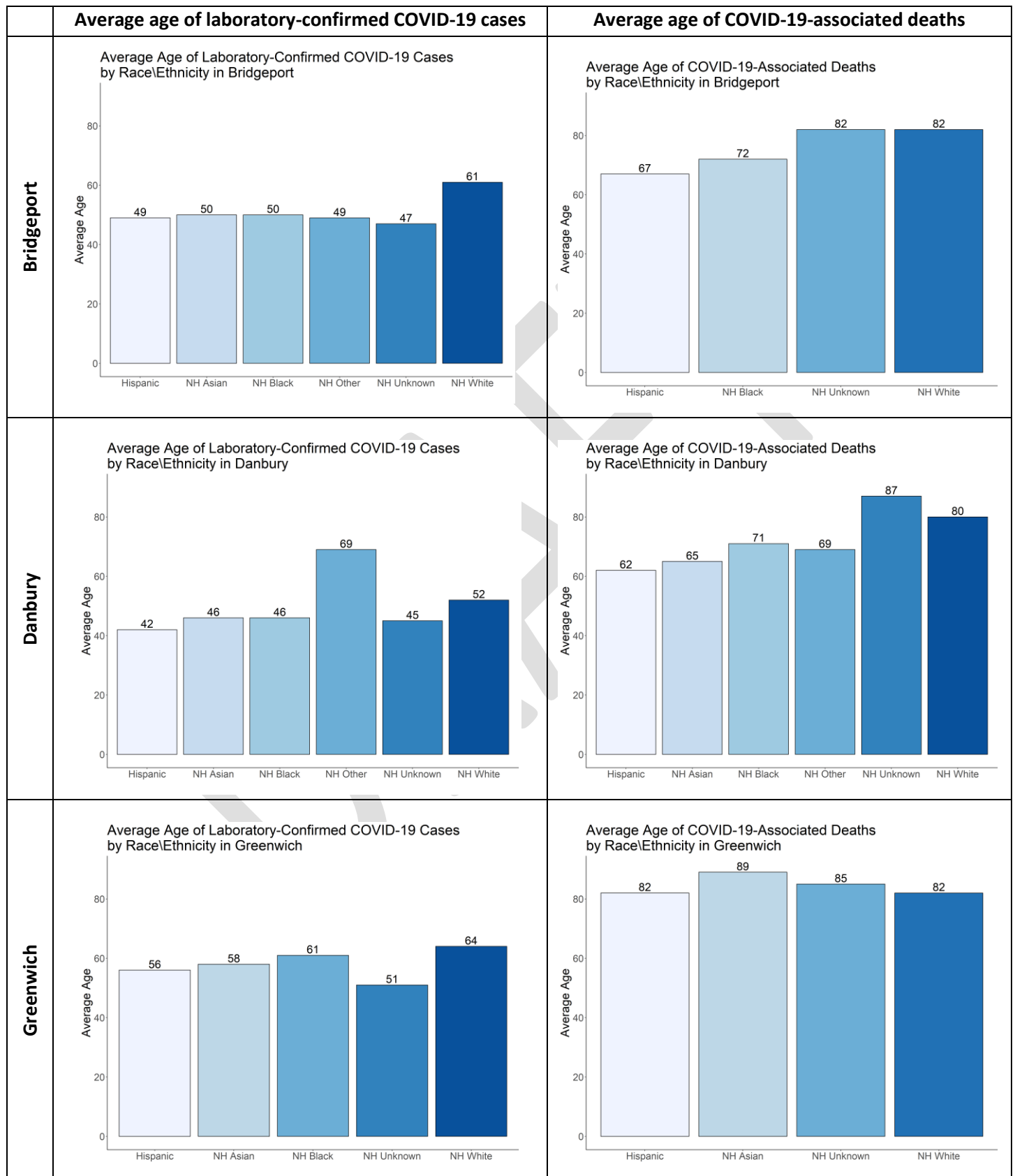


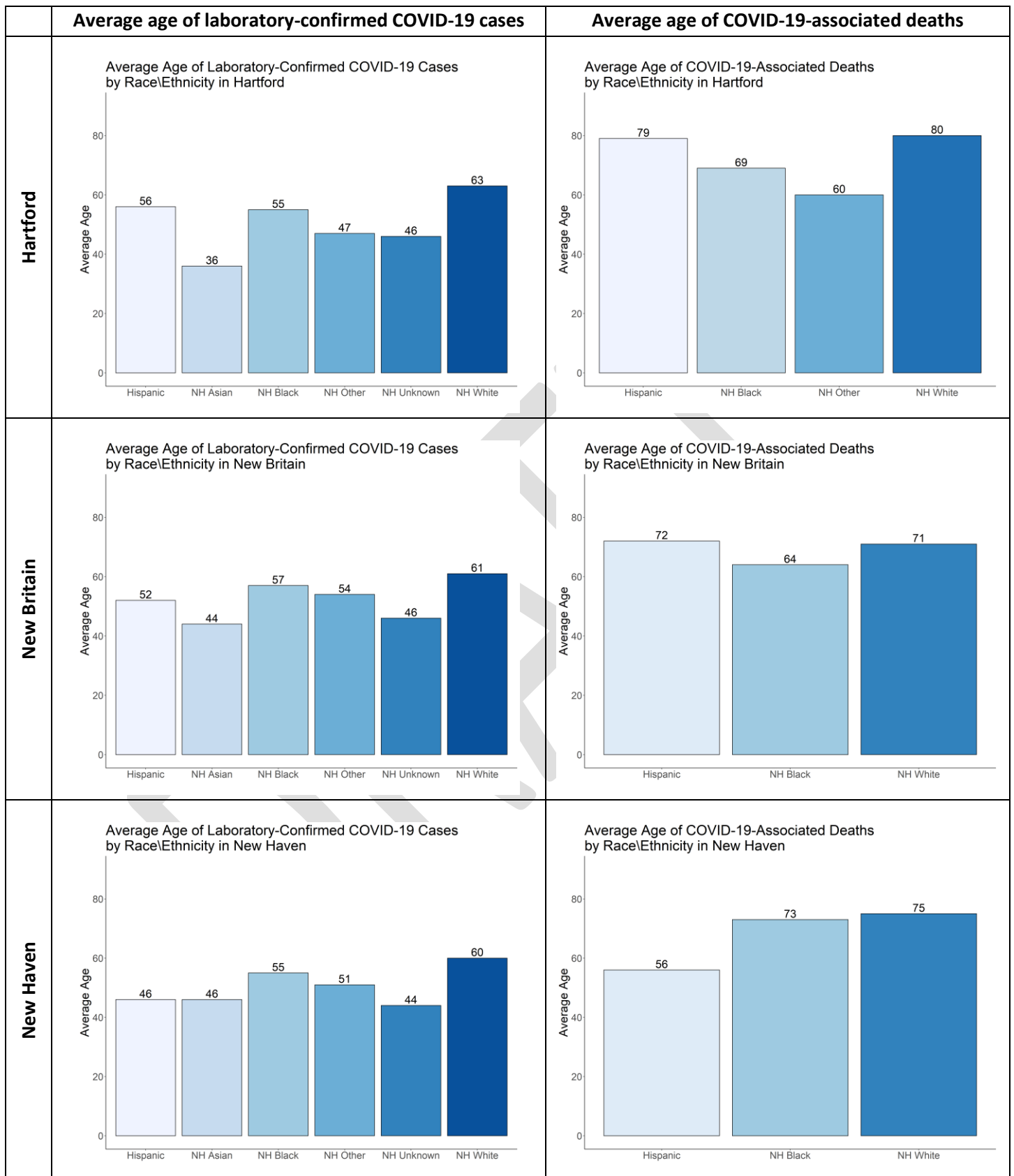
3. Average age of laboratory-confirmed COVID-19 cases and COVID-19-associated deaths by race and ethnicity

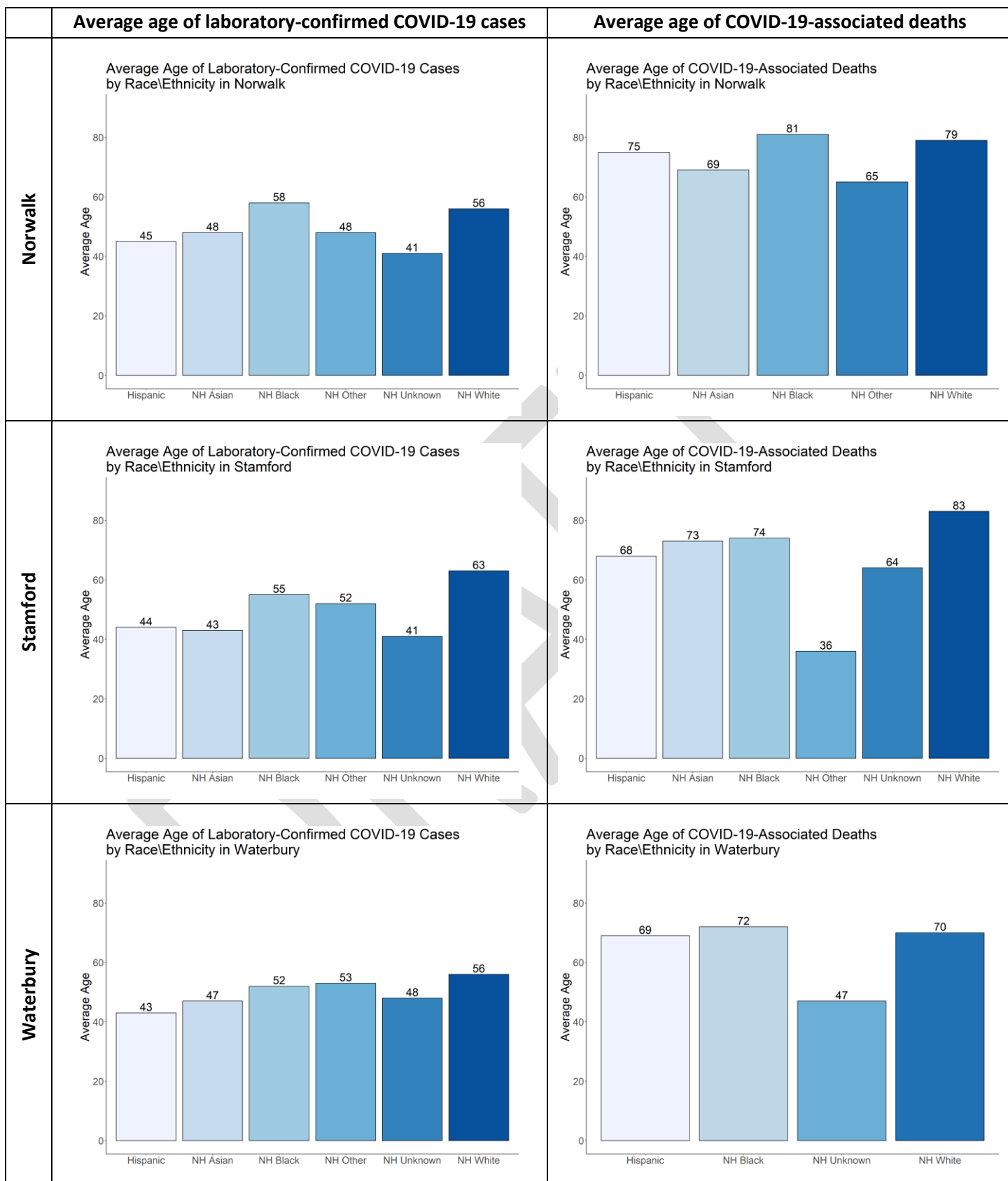


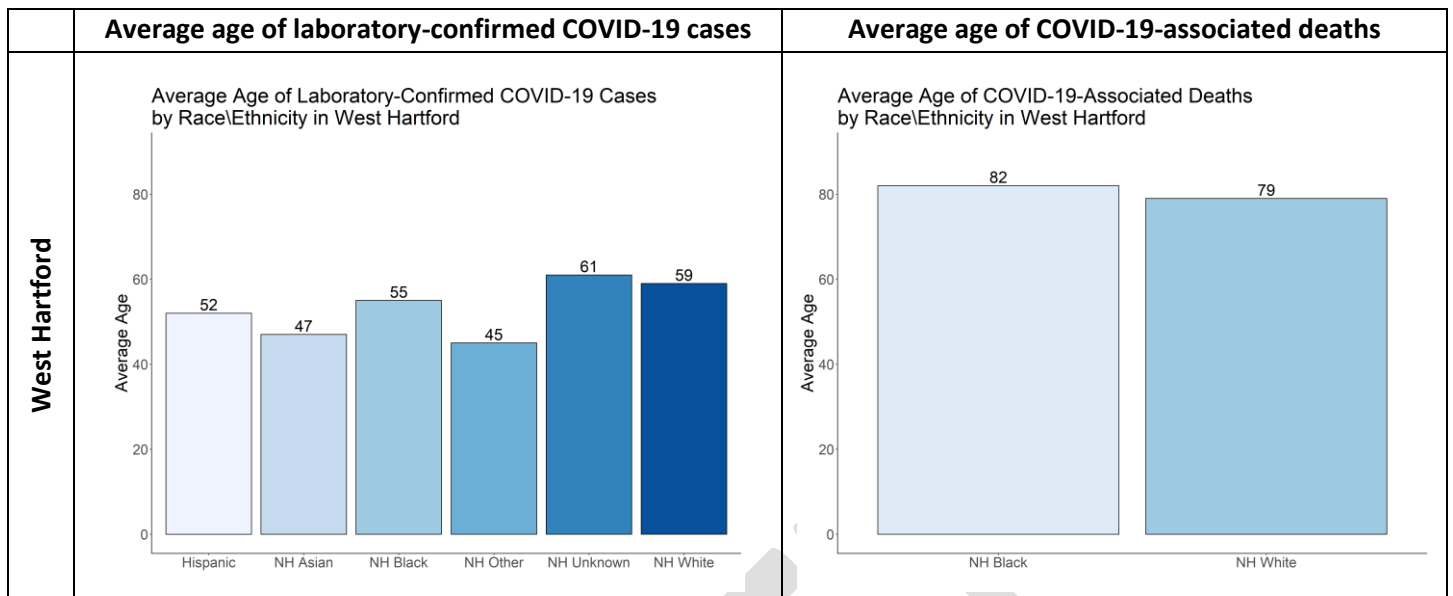


## Average age of COVID-19-associated deaths by race and ethnicity for the 10 largest Connecticut towns



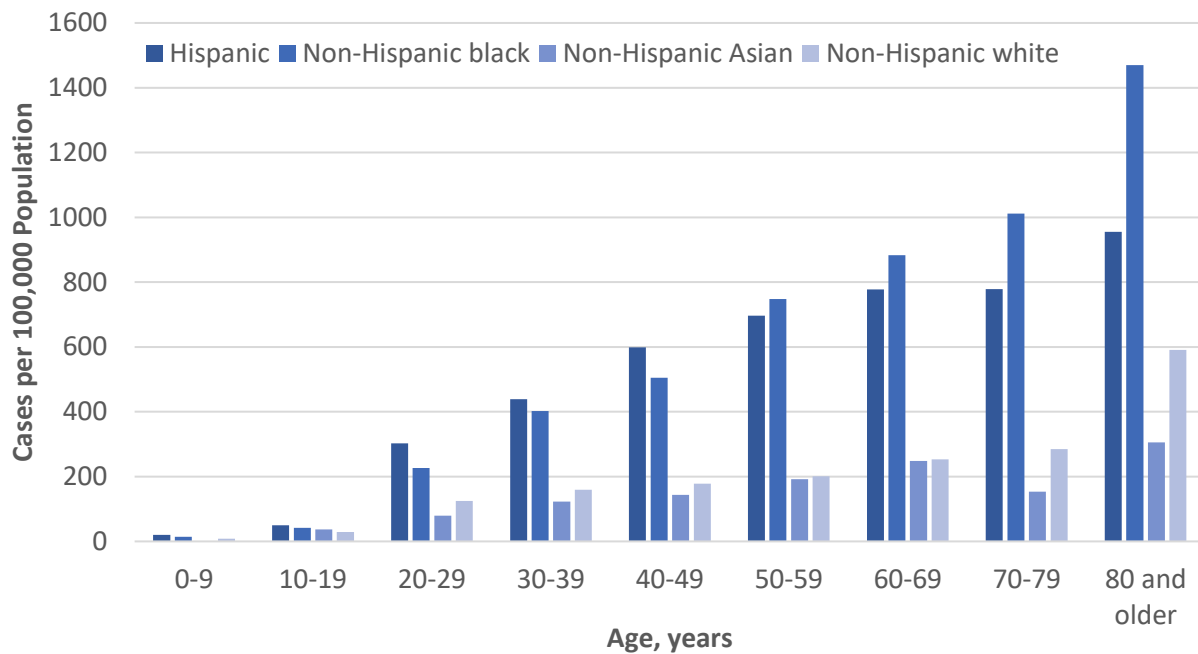






4. Rate of laboratory-confirmed COVID-19 cases per 100,000 population, by age and race/ethnicity for Connecticut and the 10 largest Connecticut cities

**Rate of laboratory-confirmed COVID-19 cases per  
100,000 population, by age and race/ethnicity,  
Connecticut**



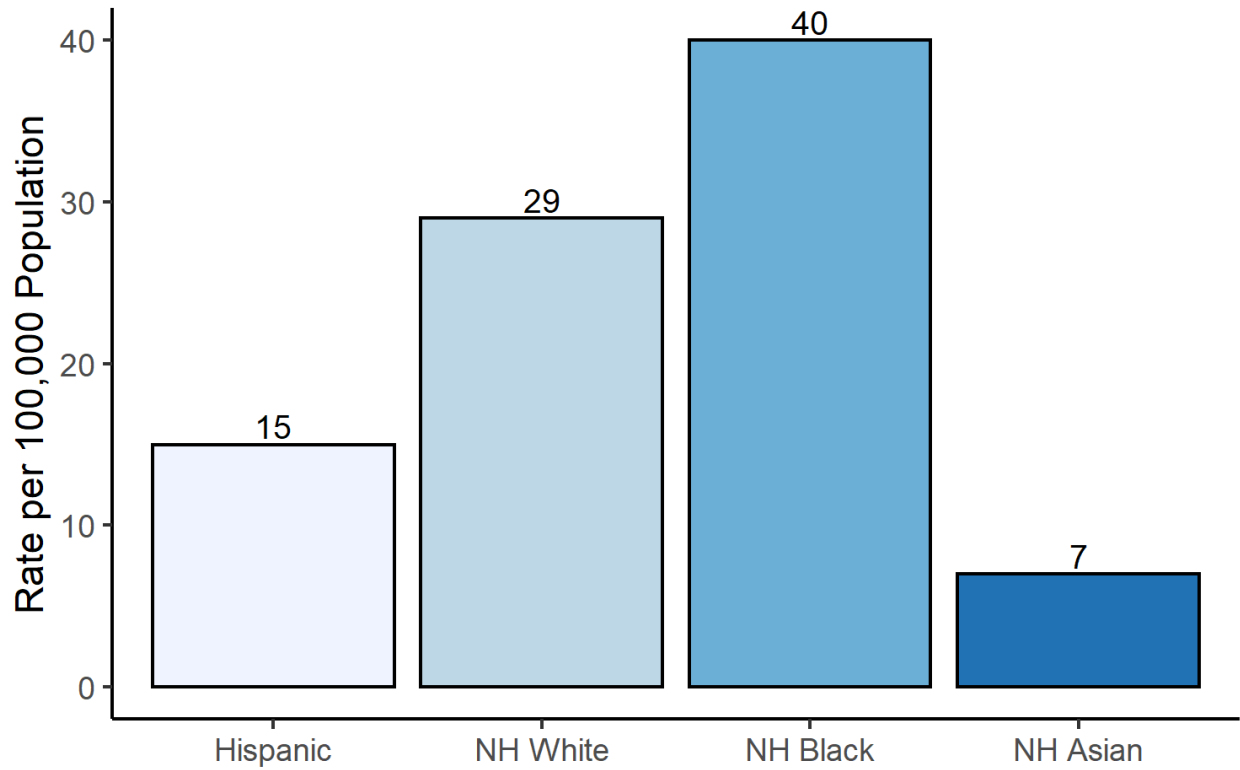
Rate of laboratory-confirmed COVID-19 cases per 100,000 population, by age and race/ethnicity for the 10 largest Connecticut towns


DRAFT

5. Rate of COVID-19-associated deaths per 100,000 population by race/ethnicity for Connecticut and the 10 largest Connecticut towns

### Rate of COVID-19-Associated Deaths by Race\Ethnicity

As of 04/17/2020 at 11:30am



Rate of COVID-19-associated deaths per 100,000 population by race/ethnicity for the 10 largest Connecticut towns


DRAFT